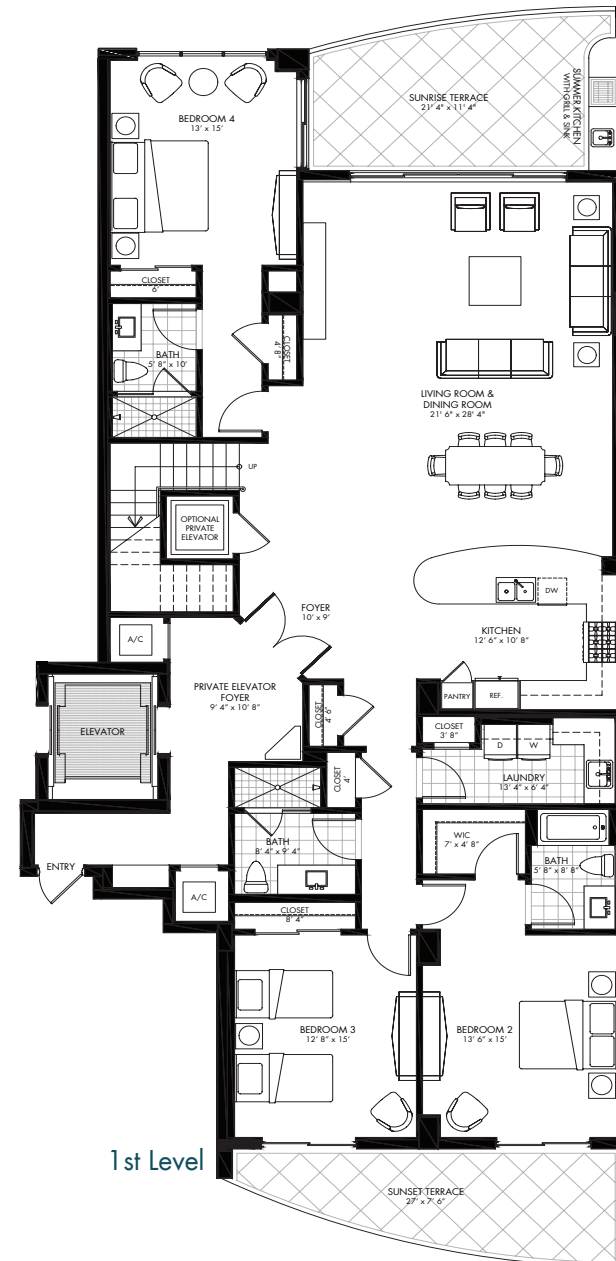


CHARLESTON PENTHOUSE

1ST LEVEL

- 4 bedrooms, 4 bathrooms
- 3,910 square feet total
- 240 square foot Gulf front covered south facing Sunrise Terrace with optional outdoor summer kitchen and gas grill on main level
- 200 square foot covered northwest facing Sunset Terrace
- Private elevator with direct access to unit and private elevator foyer
- Open living, dining and kitchen with Gulf views
- Kitchen features breakfast bar, separate pantry, stainless steel appliances, premium grade counters and cabinets
- Two guest bedrooms have direct terrace access, walk-in closets and en-suite bathrooms
- Third guest bedroom has direct terrace access
- Full-size laundry room with storage and sink
- Private 2-car garage

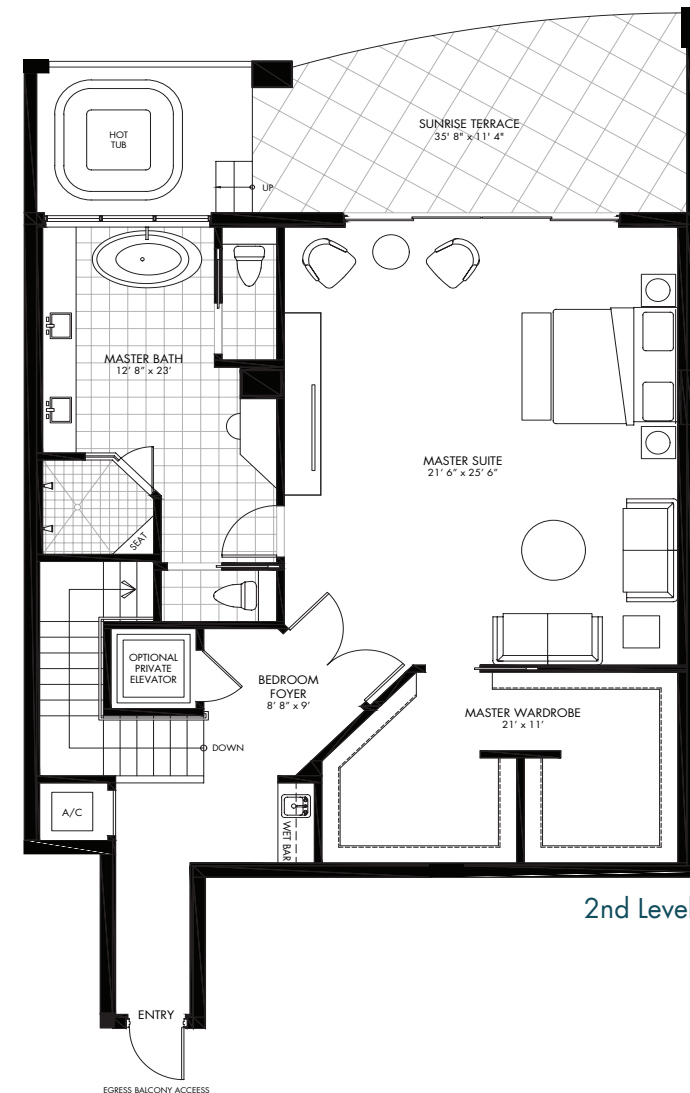


James Adduci, Broker, Vector Realty Destin | 877-447-3767 | James@StKittsCondo.com | www.StKittsCondo.com

CHARLESTON PENTHOUSE

2ND LEVEL

- 1,320 square foot Gulf front master suite on second level
- Private Gulf front covered southeast facing Sunrise Terrace with optional hot tub
- Wet bar
- Master his and hers wardrobe/dressing room
- Large en-suite bathroom, separate tile shower with double shower heads and seat, soaking tub, double vanities, granite counters, double water closets
- Optional residential elevator inside unit



2nd Level

James Adduci, Broker, Vector Realty Destin | 877-447-3767 | James@StKittsCondo.com | www.StKittsCondo.com

Floor plan may depict upgrades, features and amenities that are not standard. Floor plan rendering may not be drawn to scale. Any dimensions on the floor plan rendering are approximate and actual dimensions may vary. Units may be constructed with floor plan that is the reverse of the floor plan rendering. Plans are copyrighted and subject to intellectual property rights of Resort Development of Destin, Inc and cannot be reproduced or copied without prior written consent. Plans, specifications and pricing are subject to change without notice.
*Unit not sold furnished, furnishings placed for illustration purposes only